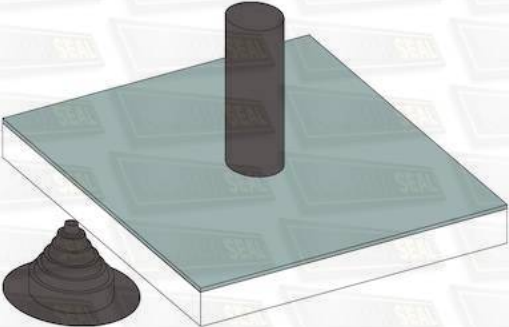
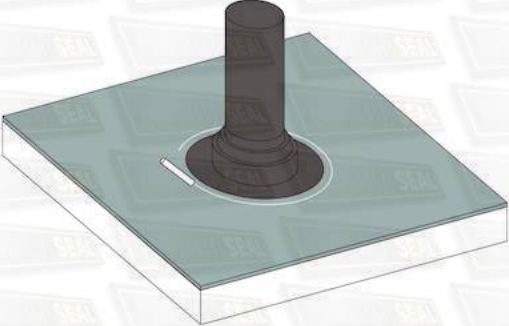
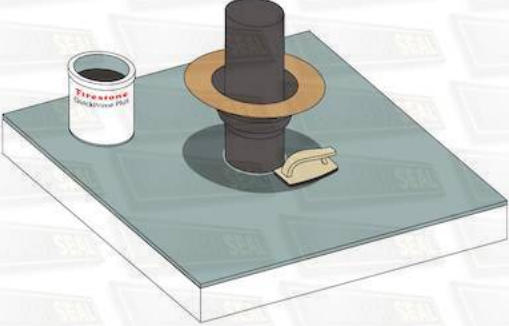
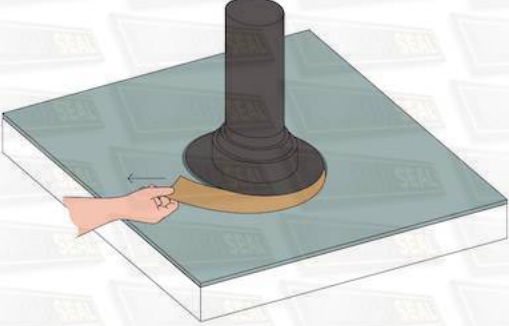
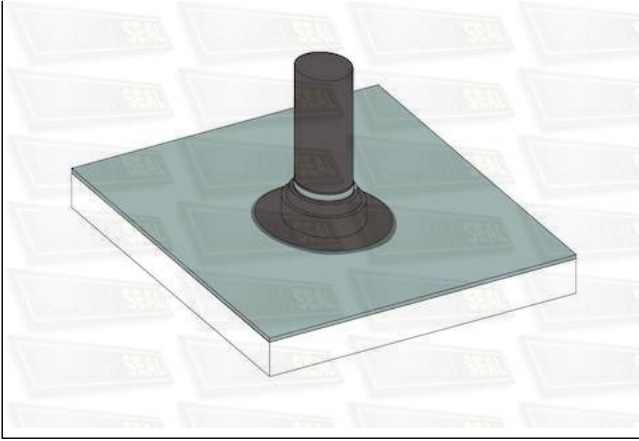


Pipeseal

Step by step guide on installing a pipe seal to your next EPDM Roofing project.

	<p>Step 1 Place pipe seal over the top of the pipe and cut with a knife or scissors to ensure a snug fit. Shop EPDM Pipe Boots</p>
	<p>Step 2 Stretch boot over the pipe until the flange touches the deck, mark the perimeter with a crayon or similar, allowing an additional 2cm.</p>
	<p>Step 3 Fold the pipe boot up or remove and apply primer to the marked area using the quick scrubber pad and handle, allow to dry.</p>
	<p>Step 4 Reposition pipe seal, locate the joint in the release paper and slowly remove at a shallow angle smoothing as you go with your hand. Once the backing paper has been totally removed roller using silicone roller.</p>



Step 5

Apply a small bead of silicone sealant to the top of the pipe seal and secure with jubilee clip.